

Gossamer Tuck Lace Shawl / Scarf
Machine knit on PASSAP DM80

I've knit this many times, always with a fine merino or wool blend 2 ply (about 1500 yds/100 grams). Less than 3 oz will make a very large shawl, 15 repeats wide and 57 repeats long, which blocks to 24" wide and 68" long.





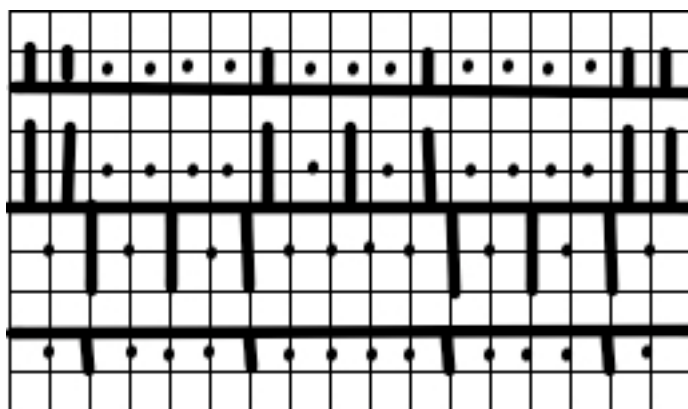
CAST ON **66L to 75R** (front bed). Handle up. Set needles for 1 x 1 rib, with outside needles on back bed.

Tension 3 N/N Hang comb

Tension 5.5 CX/CX

Tension 7 N/N

Handle down. Black strippers, Transfer stitches and set up pushers according to diagram. (Move 75R on front bed to needle at left.)



9 st repeat (front bed), plus 5 st at rt edge

↑
75R

pushers

needles

needles

pushers

(Diagram shows edge stitches on both sides.)

Add two heavy weights.

Lace pattern:

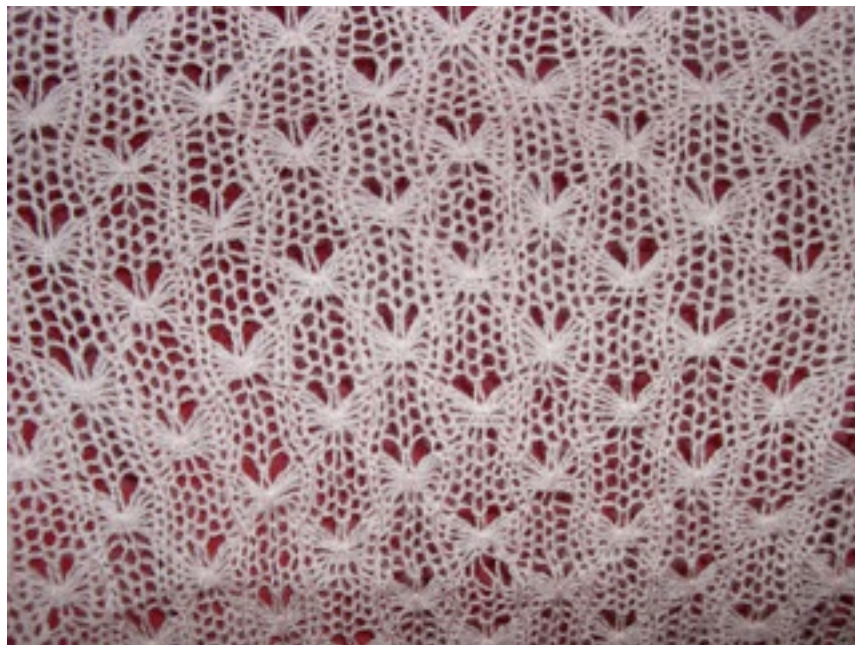
6 rows N/AX (Tucks on front bed.)

6 rows AX/N (Tucks on back bed.)

Knit first row of every tuck group SLOWLY, especially at beginning of row. Also, “milk” the yarn tension before beginning this row.

Knit 700 rows in pattern.

N/N two rows. Leave three yards of fashion yarn as a tail and then knit 20 rows with waste yarn. Scrap off. Pick up last row of fashion yarn sts with knitting needle. Bind off, with a YO between each knit stitch. Wet block wool lace.



© 2008 Jana Trent
All Rights Reserved